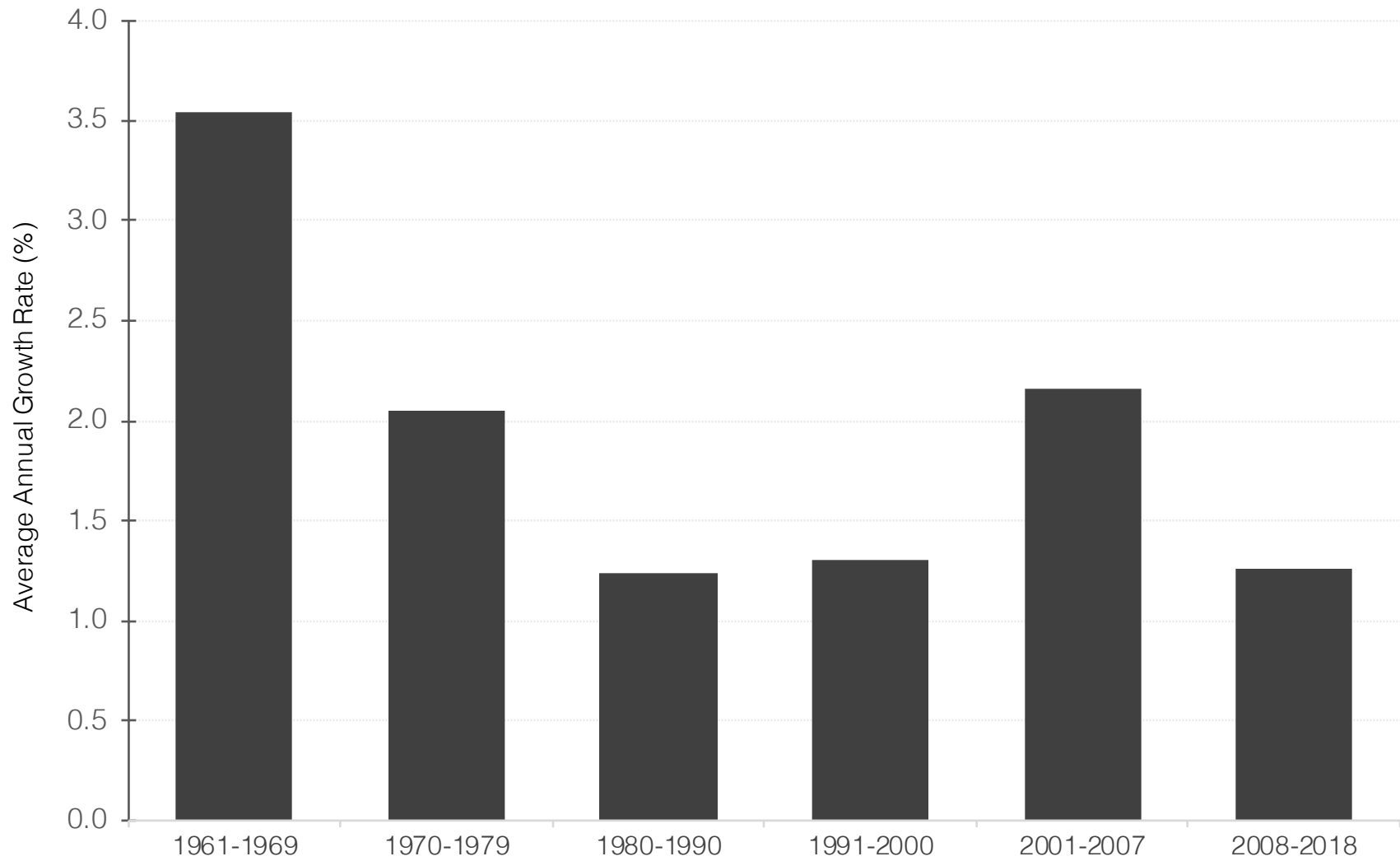


Robert Brenner

Graphs & Tables

Coronavirus, Crash & Crisis

World GDP Per Capita, 1961-2018



Source: World Bank national accounts data

DECLINING ECONOMIC DYNAMISM, 1961-2019

(average annual per cent change)

GDP

(2010 reference levels)

	1961-1970	1971-1980	1981-1990	1991-2000	2001-2007	2008-2019
US	4.3	3.2	3.3	3.4	2.5	1.7
Japan	10.1	4.4	4.6	1.3	1.3	0.6
Germany	4.4	2.9	2.3	2.0	1.4	1.2
European Union: Twelve countries**	5.3	3.4	2.4	2.2	2.0	0.8

Non-Residential Capital Stock (Private Business Economy)

	1960-1969	1969-1979	1979-1990	1990-2000	2000-2007	2007-2019
US	3.9	3.7	3.0	2.9	1.8	--
Japan	12.5*	9.4	6.1	2.9	1.1**	--
Germany	6.7	5.2	3.3	2.4	1.2	--
Industrial	5.0	4.2	3.1	3.3	2.1	--

Labor Productivity Total Economy (GDP/Worker)

(2015 reference levels)

	1961-1970	1971-1980	1981-1990	1991-2000	2001-2007	2008-2019
US	2.4	1.0	1.5	2.1	1.6	1.0
Japan	8.6	3.7	3.7	1.2	1.1	0.3
Germany	4.2	2.6	1.3	1.4	1.3	0.3
European Union: Twelve countries	5.2	3.0	1.7	1.5	0.9	0.5

Real Compensation Total Economy (per employee)

	1961-1970	1971-1980	1981-1990	1991-2000	2001-2007	2008-2019
US	2.7	0.7	1.1	2.1	1.1	0.8
Japan	7.5	3.9	2.0	0.6	-0.4	0.3
Germany	5.7	2.9	0.7	1.3	-0.3	1.2
European Union: Twelve countries	5.9	3.0	0.5	0.8	0.3	0.7

GDP Per Capita

(Purchasing Power Standard)

	1961-1970	1971-1980	1981-1990	1991-2000	2001-2007	2008-2019
US	--	--	--	0.4	-0.3	0.0
Japan	--	--	--	-0.7	-0.6	-0.5
Germany	--	--	--	-1.3	-0.1	0.7
European Union: Twelve countries	--	--	--	-0.1	0.0	0.0

Private Employment

	1961-1970	1971-1980	1981-1990	1991-2000	2001-2007	2008-2019
US	1.8	2.1	1.8	1.3	0.9	0.6
Japan	1.4	0.8	0.9	0.2	0.2	0.2
Germany	0.2	0.3	1.0	0.6	0.1	0.9
European Union: Twelve countries	0.2	0.4	0.7	0.8	1.1	0.4

Private Consumption Expenditure

(2015 reference levels)

	1961-1970	1971-1980	1981-1990	1991-2000	2001-2007	2008-2019
US	4.4	3.2	3.5	3.7	3.0	1.9
Japan	9.0	4.7	4.0	1.5	1.2	0.5
Germany	5.1	3.4	2.1	2.0	0.4	1.2
European Union: Twelve countries	5.6	3.7	2.3	2.1	1.5	0.6

Sources:

European Commission, Statistical Annex of European Economy, Autumn 2019

OECD, Historical Statistics, 1960-1995, Paris, 1995, Table 2.15, 3.1, 3.2;

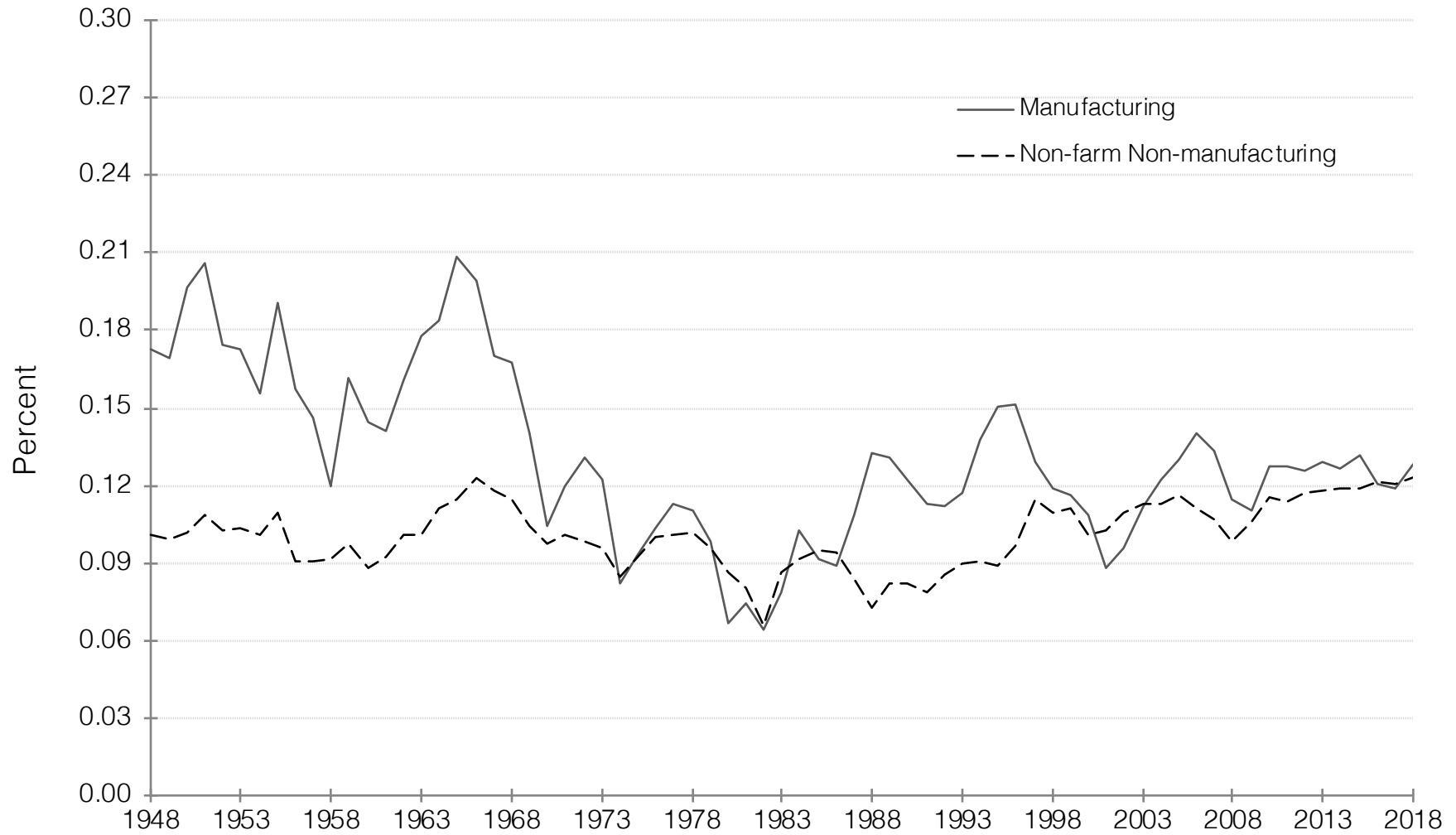
*Gross Stock **Weighted in common currency; Former Euro area 12

US Nonfinancial Corporate Sector: Net Profit Rate, 1945-2018



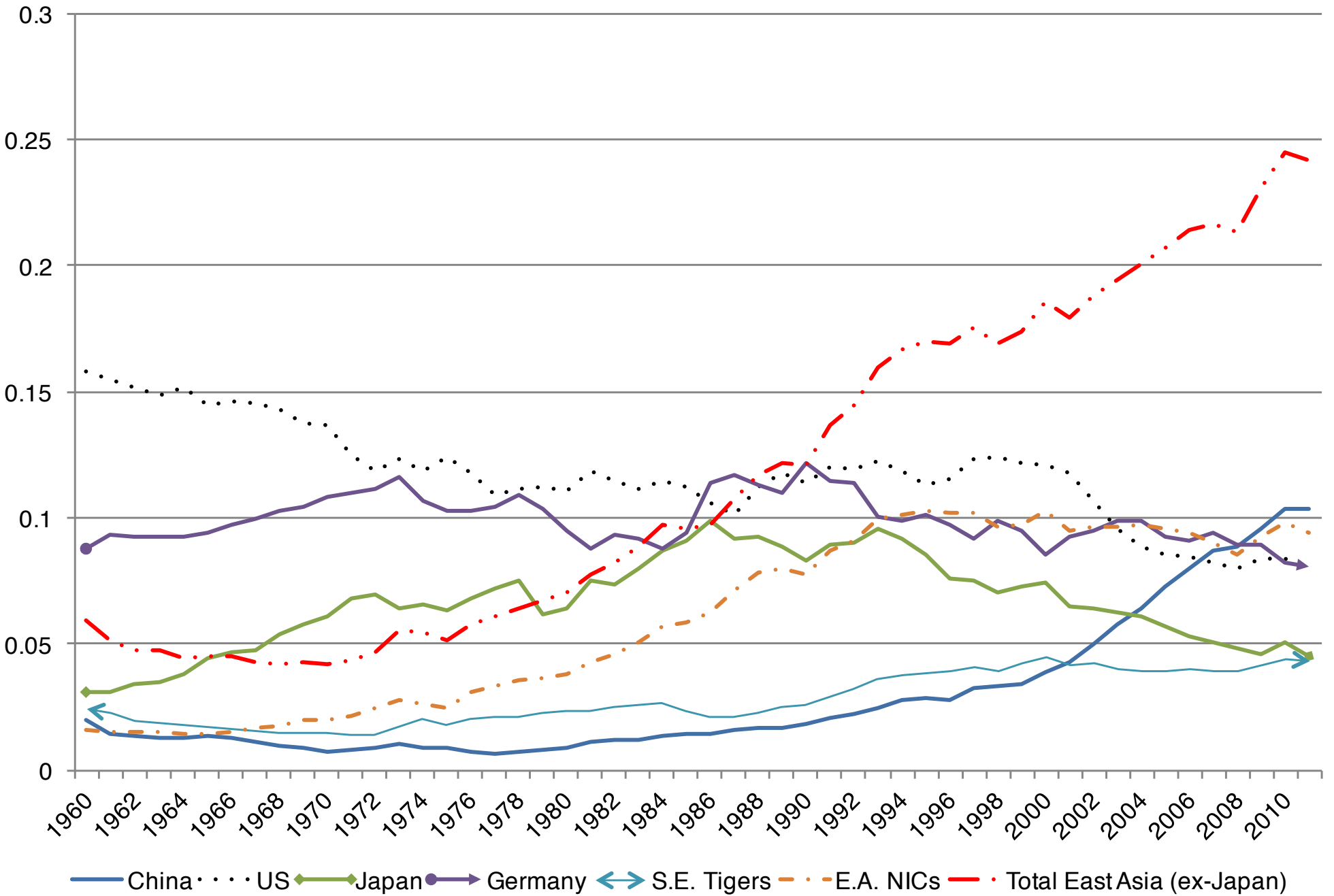
Note: BEA NIPA Table 1.14; BEA Fixed Asset Accounts Table 4.1

Manufacturing and Nonmanufacturing Profit Rates, 1948-2018

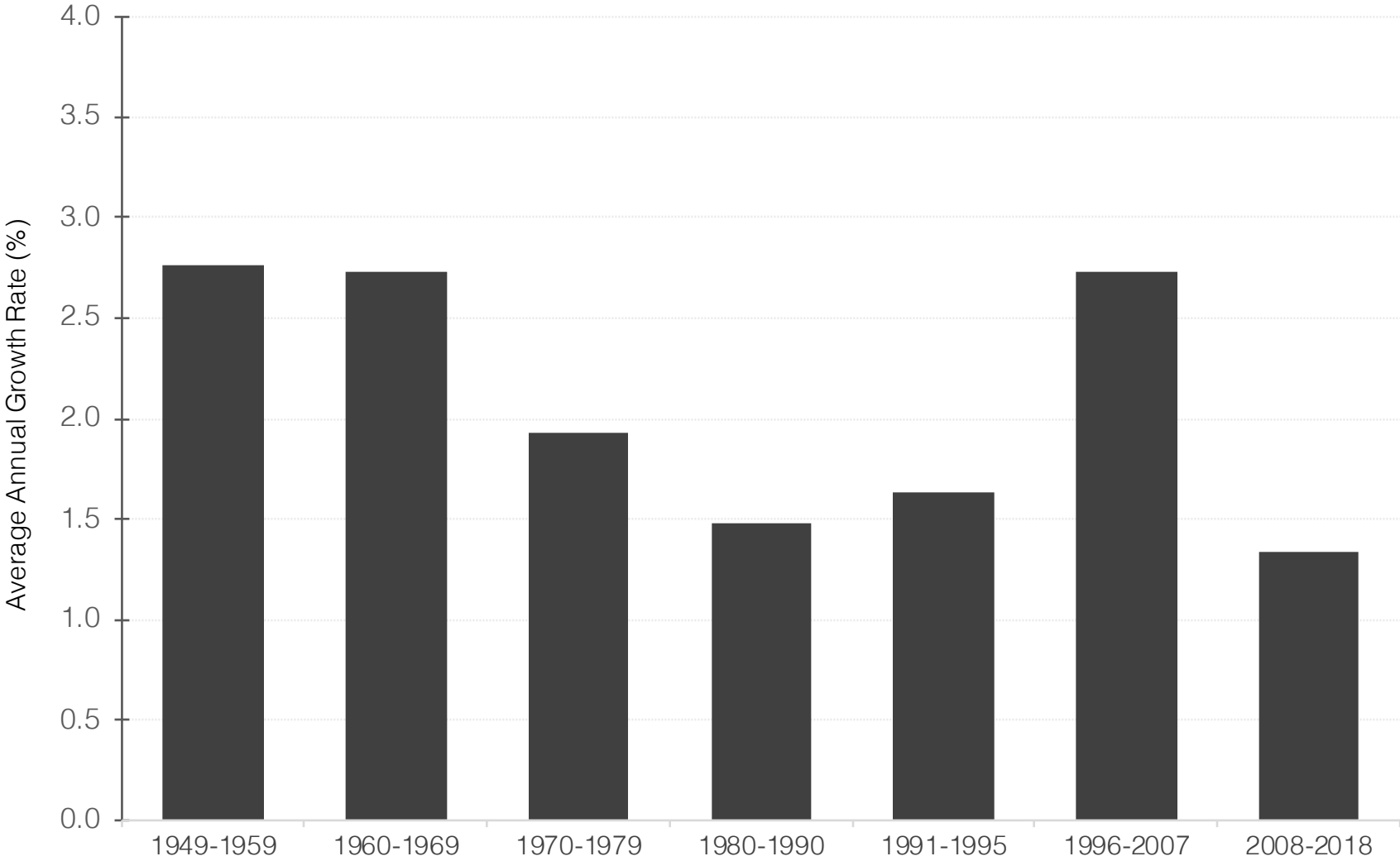


Note: BEA SIC data for 1948-1996; BEA NAICS data for 1997-2018

Export Shares of World Export Trade 1960-2012

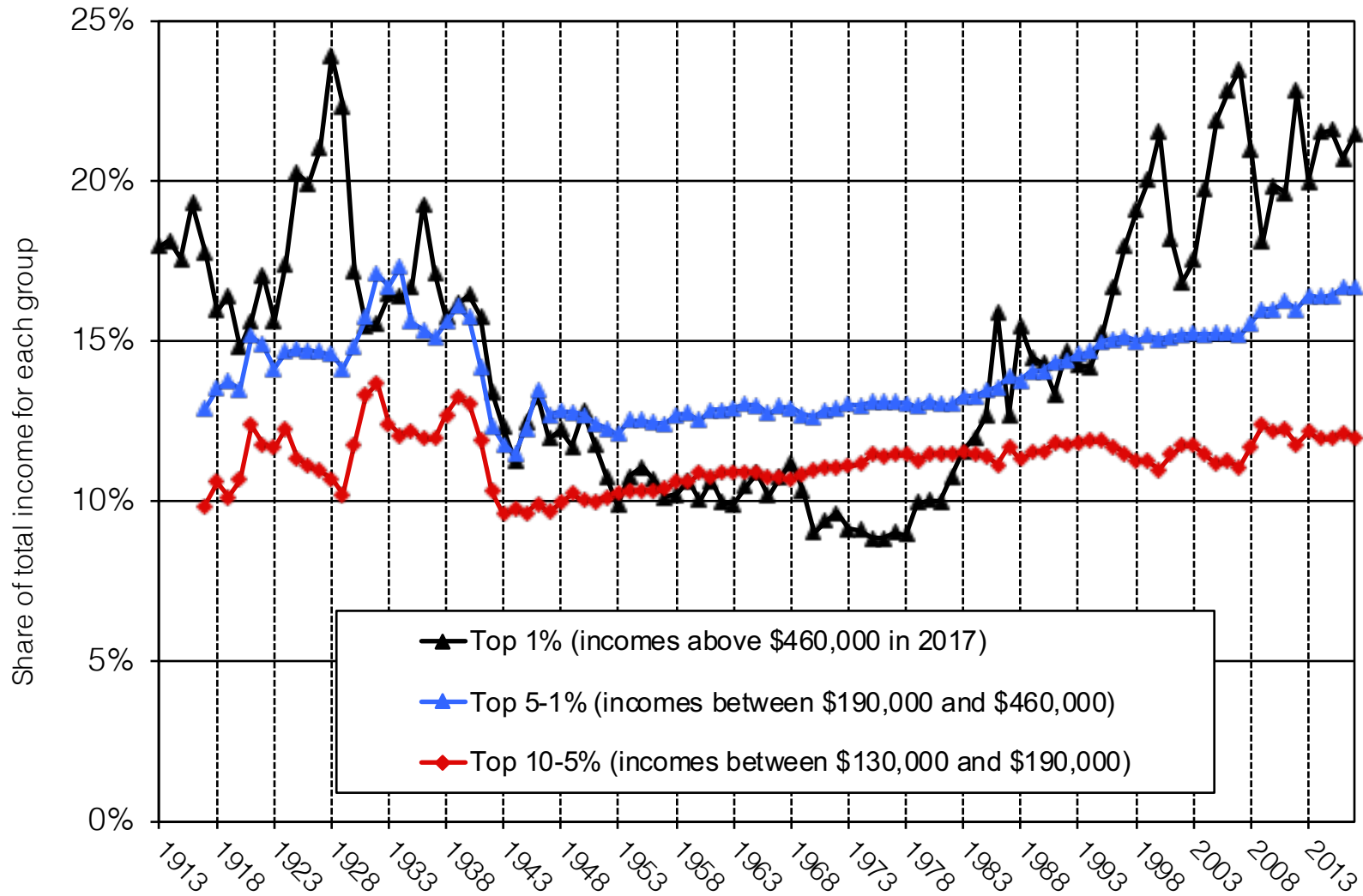


Private Nonfarm Growth of Labor Productivity, 1949-2018



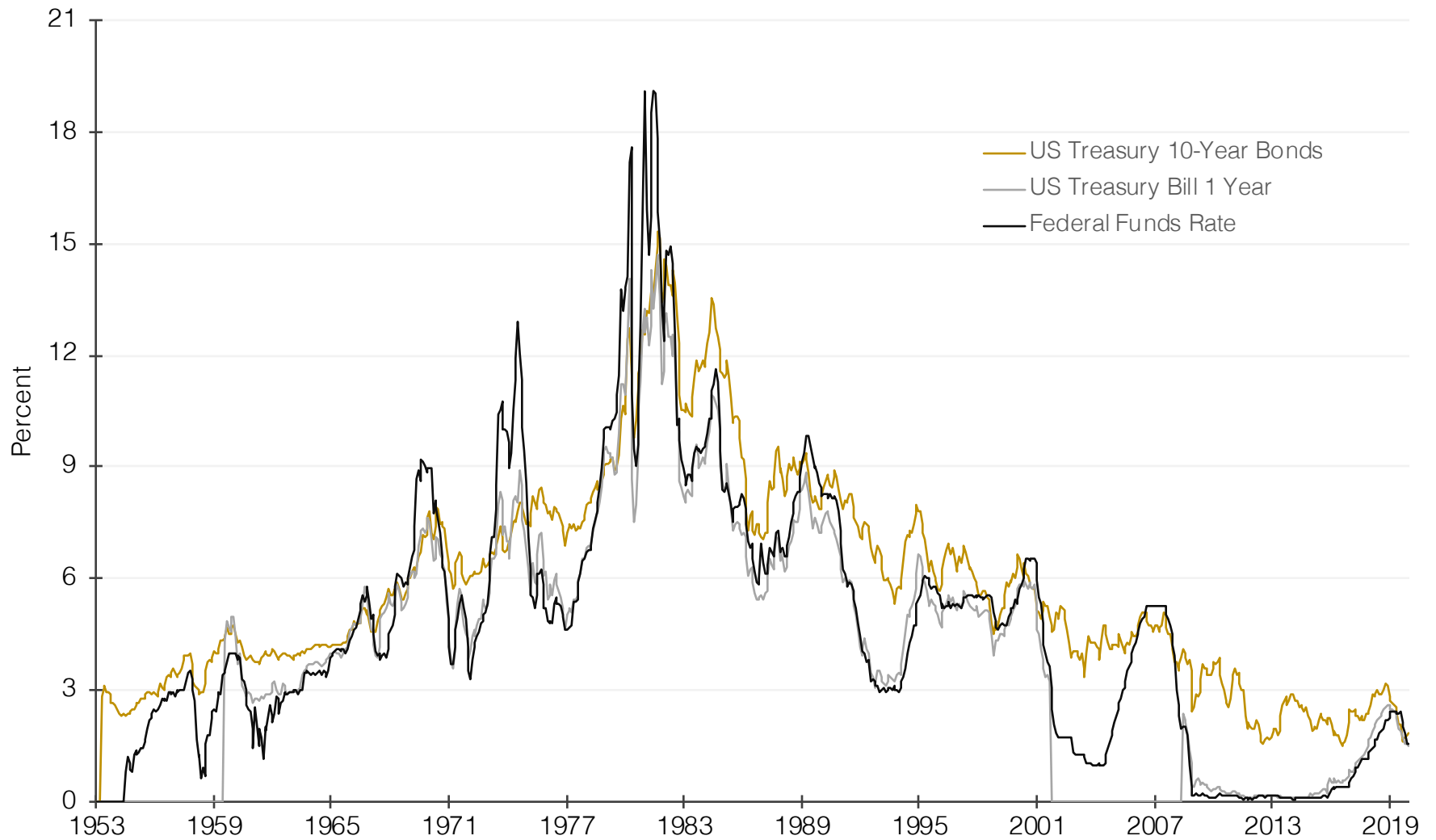
Source: BEA SIC data 1948-2000; BEA NAICS data 2001-2018

Decomposing Top 10% into 3 Groups, 1913-2017



Source: Piketty and Saez, 2003 updated to 2017. Series based on pre-tax cash market income including realized capital gains and excluding government transfers.

US Long-Term & Short-Term Treasury Yields and Federal Funds Rate, 1953-2019



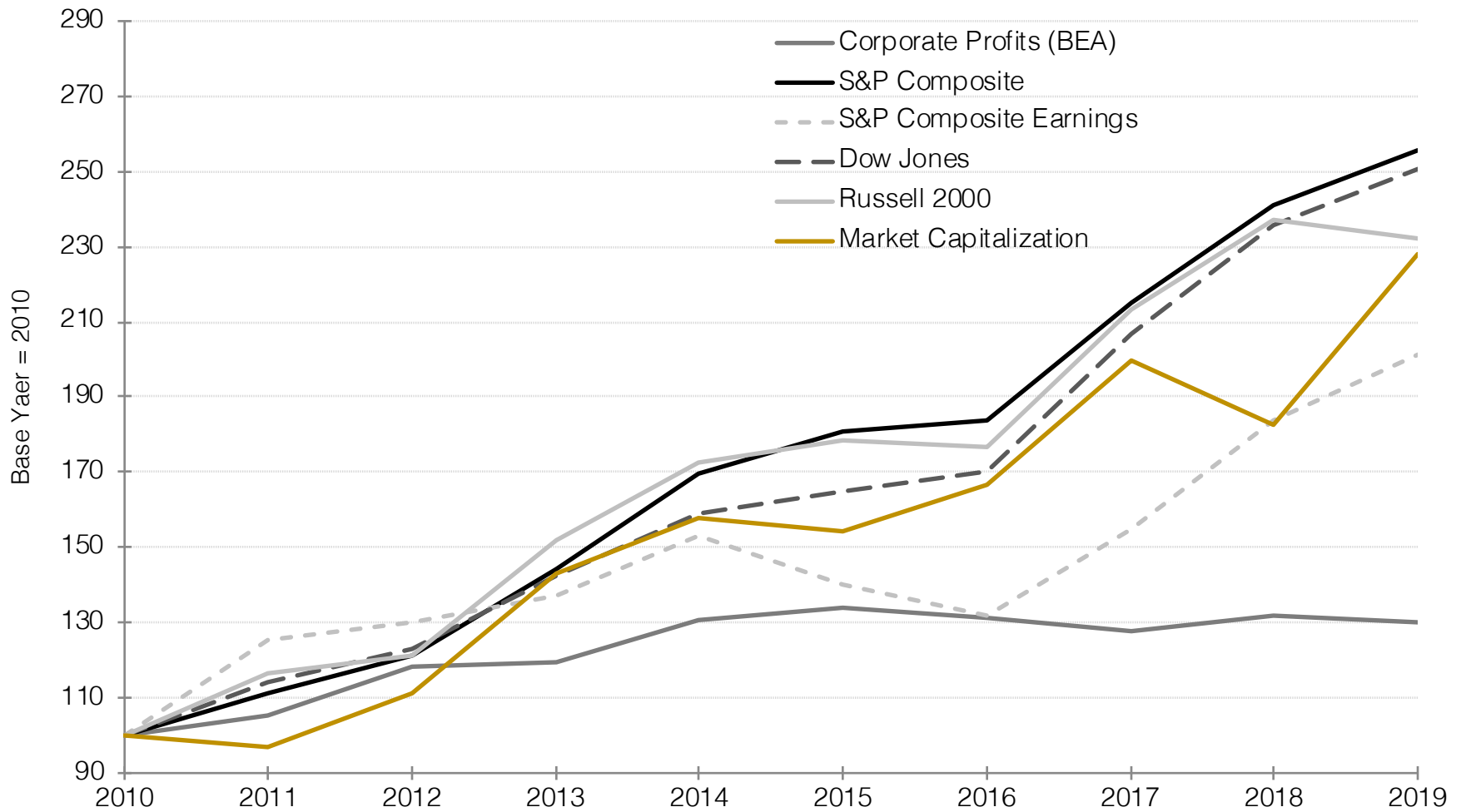
Source: Federal Reserve Board H.15 Selected Interest Rates

Price-Earnings Ratio, 1920-2019



Source: 'US Stock Markets 1871-Present and CAPE Ratio', available at Robert Shiller's web site

US Corporate Sector: Profits, Stock Prices, and Market Capitalization, 2010-2019



Source: BEA NIPA Table 1.14; Yahoo Finance; S&P Composite from Robert Shiller's *Irrational Exuberance* data set